

EasyGo+ and EETS RSE functional requirements

Enclosure D to Document 202 “Roadside and on-board equipment”

This copy of the document was published on www.easygo.com and is for information purposes only. It may change without further notice.

Table of contents

DOCUMENT REVISION HISTORY	3
ABBREVIATIONS	4
1 SCOPE OF THE DOCUMENT	5
2 FUNCTIONAL REQUIREMENTS	5
2.1 DSRC COMMUNICATION	5
2.2 TRANSACTION RECORD	12
2.3 TARIFF MANAGEMENT	12
2.4 LIST MANAGEMENT	12
3 DSRC INTERFACE	15
3.1 BASIC REQUIREMENTS	15
3.2 EN15509 TOLLING TRANSACTION	21
3.3 DATA SPECIFICATION	23
3.4 SECURITY FEATURES	23
4 EXAMPLE FOR TOLL TRANSACTION DATA (INFORMATIVE)	24
5 REFERENCES	26
5.1 STANDARDS AND EXTERNAL DOCUMENTS	26
5.2 EASYGO DOCUMENTS	27

Document revision History

Version	Date	Author	Main changes
0.1	11.06.2010	HHA	First draft
0.2	22.06.2010	RL, HHA	Revision by RL, HHA
0.3	01.07.2010	RL, HHA	Open items solved, example for transaction data record included (Annex A)
0.31	05.07.2010	RL	Clarifications in ch. 2.1.3/ table 2
1.00	18.11.2010	HHA	Document release
1.50		HHA	Adaptation as enclosure to EasyGo document 202
1.51	18.11.2011	HHA	Editorial changes
1.52	11.04.2013	HHA	References updated
2.0	02.05.2013		Approved by steering committee
2.1	19.12.2017	HHA	Editorial changes to and minor updates to include EETS
2.2	22.02.2017	HHA	Release version
3.0	2017.02.2018		Approved by steering committee

Abbreviations

Abbreviation, Term	Description
APDU	Application Protocol Data Unit
AttrID	Attribute Identifier
BST	Beacon Service Table
CS	Central System for all TS
DES	Data Encryption Standard
DSRC	Dedicated Short-Range Communication
Exception list	Blacklist
EFC	Electronic Fee Collection
L1	Layer 1 of DSRC (Physical Layer)
L2	Layer 2 of DSRC (Data Link Layer)
L7	Layer 7 of DSRC (Application Layer)
LLC	Logical Link Control
LPN	Licence Plate Number
MMI	Man-Machine Interface
OBE	On-Board Equipment
OBU	On-Board Unit
PDU	Protocol Data Unit
RSE	Roadside Equipment
TSP	Toll Service Provider, Contract Issuer
UTC	Coordinated Universal Time
VST	Vehicle Service Table

1 Scope of the document

This document describes DSRC related requirements for DSRC Roadside Equipment where the DSRC interface shall be compliant to EN15509 which is required for the EasyGo+ and EETS services.

The Tolling Station shall be able to detect the presence of OBEs in the vehicle and handle a complete DSRC tolling transaction with such OBEs.

2 Functional Requirements

2.1 DSRC communication

2.1.1 Implemented transactions

The RSE shall perform transactions with EN 15509 compliant OBEs; the tolling transaction shall provide all needed information for charging the customer's account for the due fee.

The RSE shall be able to recognise the following types of OBEs:

- Central Account Interoperable OBE compliant with EN15509
- Other local transactions

The type of OBE shall be detected according to the content of EFC-ContextMark and EquipmentClass/ManufacturerId transmitted in the OBE's Vehicle Service Table.

The RSE is the master of the communication and is therefore generally free to request any available data attribute stored in the OBE. The RSE can decide which transaction to perform with the present OBE. The OBE only responds to "requests" of the RSE and the RSE shall decide which data to retrieve and hence which transaction to perform based on the OBE's characteristics.

During the communication and depending on the data retrieved from the OBE, the RSE shall perform actions and decisions in order to determine the logical result of the transaction.

The RSE decides whether the transaction is valid or not valid according to the logical decision flow associated to the transaction as depicted in Figure 1. The following subchapters explain the detailed phases and the outcome of the transaction.

Note that Figure 1 does not depict the actual flow of the transaction, but only the logical flow to determine the result of the transaction. The actual flow always respects the relevant specifications.

Access to data in the OBE will be regulated by specific Access Credentials because Security Level 1 (acc. to EN15509) is applied in interoperable context. If the OBE answers with an access denial the transaction is aborted.

The output of the decision flow is the logical transaction result that can have one of the following values:

- Valid
- Valid, but warning
- Not valid, expired
- Not valid

The logical transaction result is used to:

- determine the value of the OBE data element ReceiptData1_SessionResult
- trigger the OBE's MMI (see [EasyGo-202-A]),
- set the transaction result field of the Transaction Record

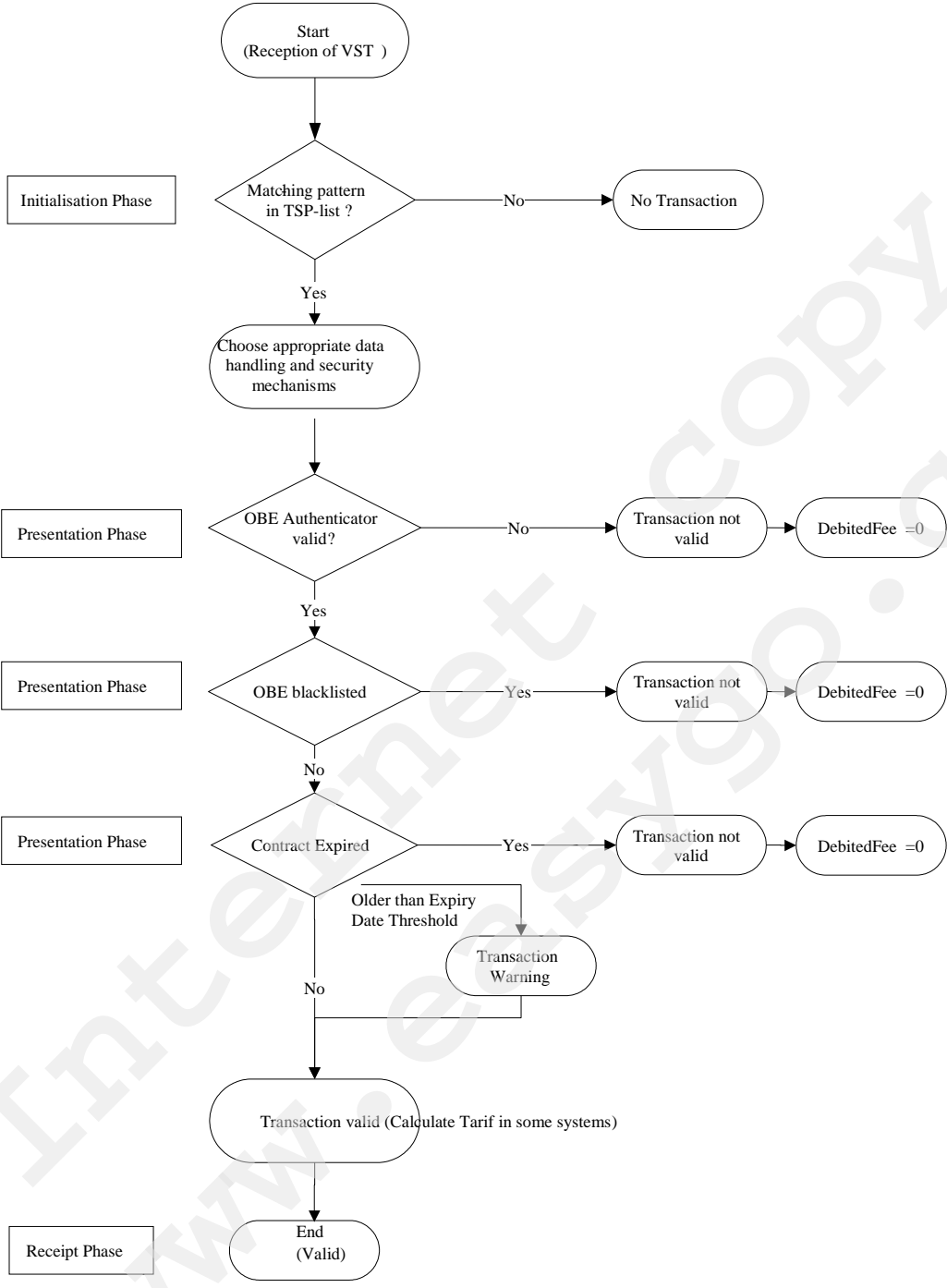


Figure 1 Logical decision flow

2.1.2 Initialisation Phase

The RSE beacons periodically broadcast a Beacon Service Table (BST) with ApplicationID = 1 (EFC). The content of the BST is specified in document 202-C [EasyGo-202C].

At the passage of a vehicle with a system compliant OBE under the RSE, the OBE receives the BST. If the OBE contains an EFC-Context Mark with ApplicationId = 1, it answers with a Vehicle Service Table. The content of the VST is specified in document 202-C [EasyGo-202C].

Each time the RSE receives a VST from an OBE, it analyses the attribute EFC-ContextMark and the data elements EquipmentClass/ManufacturerID and decides how to handle the OBE (i.e. which application to use).

If the attribute EFC-ContextMark and the data elements EquipmentClass/ManufacturerID match one of the entries in the Toll Service Provider (TSP) List, the RSE shall use the associated application to perform a transaction (Either the interoperable EN15509 transaction or local transaction).

If the VST contains a list of (more than one) EFC-ContextMark, the first entry shall be used in the TSP List. Hence, even for a VST with more than one EFC-ContextMark only one transaction shall be performed.

If the EFC-ContextMark and EquipmentClass/ManufacturerID matches a valid entry in the TSP List, the transaction continues to the Presentation Phase; otherwise the transaction is terminated. A communication that does not reach the Presentation Phase is not considered as a “transaction” and shall not be further registered by the RSE and no Transaction Record will be created.

Use of Access Credentials, blacklisting, authentication, VehicleAxles handling, debiting details and SetMMI mode is controlled by data in the TSP List.

2.1.3 Presentation Phase

The RSE requests the OBE to present some parts or all of its data. This is done by requesting the content of specific data attributes in the OBE. If the Access Credential (Security Level 1) is not accepted by the OBE no further data is retrieved.

Based on the response of the OBE, the RSE shall evaluate the content of the retrieved data attributes according to table 1 below **Fejl! Henvisningskilde ikke fundet.**

Scenario	Payment Means Authenticator (TC Authenticator)	OBE present on Exception List or EquipmentStatus blacklist bit set*)	OBE PaymentMeans ExpiryDate	SET_MMI request	Transaction Result
OBE does not accept Access Credentials	Not Applicable	Don't care	Don't care	no SET_MMI (no beep)	“not valid, incomplete”

Scenario	Payment Means Authenticator (TC Authenticator)	OBE present on Exception List or EquipmentStatus blacklist bit set*)	OBE PaymentMeans ExpiryDate	SET_MMI. request	Transaction Result
OBE fails authentication	Wrong	Don't care	Don't care	NOK 4 beep code (1), if auth. Is checked at RSE,	"not valid"
OBE authenticated and not blacklisted	Correct or not checked	Not present	See Fejl! Henvisningskilde ikke fundet.		
OBE Blacklisted	Correct or not checked	Present	See Fejl! Henvisningskilde ikke fundet. in section 2.1.3.2.		

Table 1 Scenarios I, MMI response and Transaction Result

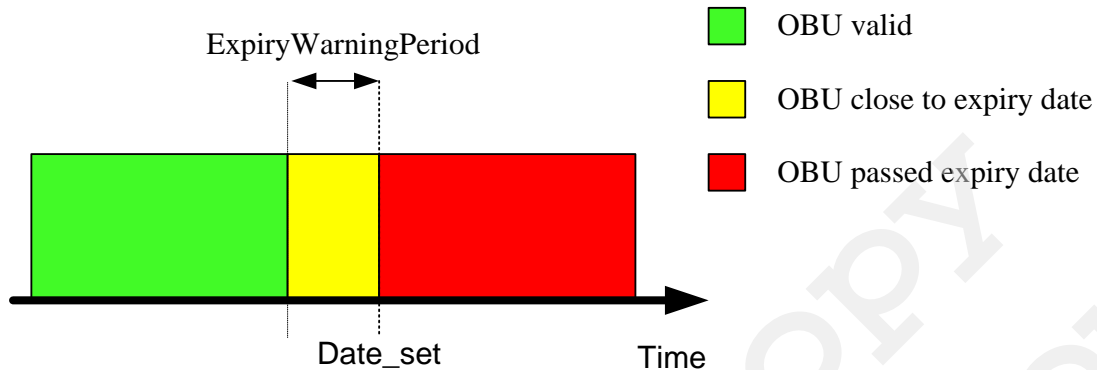
*) Implementing procedures to interpret the Blacklist bit in EquipmentStatus is up to the TC, but for possible future demands implementation is recommended.

Depending on data in PaymentMeans.PaymentMeansExpiryDate and the RSE date (RSE Current date), the OBEs shall be handled as given in **Fejl! Henvisningskilde ikke fundet..**

Case	OBE PaymentMeans ExpiryDate	Condition	SET_MMI. Request	Transaction Result
OBE passed expiry date	Date_set	$(Date_set - RSE\ Current\ date) < 0$	NOK 4 beeps (1)	"not valid, expired"
OBE close to expiry date	Date_set	$((Date_set - RSE\ Current\ date) < ExpiryWarningPeriod)$ AND $((Date_set - RSE\ Current\ date) >= 0)$	WARNING 2 beeps (2)	"Valid, but warning"
OBE valid	Date_set	$(Date_set - RSE\ Current\ date) > ExpiryWarningPeriod$	OK 1 beep (0)	"Valid"
OBE with no expiry date	0	NA	OK 1 beep (0)	"valid"

Table 2 Scenarios II, MMI response and Transaction Result

The ExpiryWarningPeriod shall be configurable with a default value of: 61 days. Due to different interpretations of the standards, the "beep code" for "Valid" transaction differs and shall be as instructed in the TSP List.



Access Credentials

Access Credentials are used if the entry in the TSP List indicates to do so (AC_CRFlag).

The Access Credentials Master Keys (16 Bytes) shall be available at the RSE and the TSP list is pointing to the key to apply for a specific OBE (with a specific contract).

2.1.3.2 Blacklisting (OBE on Exception List and/or OBE with blacklist bit (Bit 15th in EquipmentStatus set))

For indication of a blacklisted OBE there are two significant parameters:

The Exception List (Blacklist), which is searched for the OBE ID or PAN and dependent on the content of the BlacklistBitMode field of the OBE's TSP List entry for the value of 15th bit of EquipmentStatus in the OBE:

BlacklistBitmode in TSP List	EquipmentStatus (Bit 15th)	OBE present on Exception List	SET_MMI. Request	Transaction Result *)
1 or 3	Ignore	yes	NOK 4 beeps (1)	"Blacklisted by OBE-ID"
1 or 3	Ignore	no	OK 1 beep (0)	"OK"
2 or 4	Set	Don't care	NOK 4 beeps (1)	"Blacklisted by bit 15"
2 or 4	Not set	yes	NOK 4 beeps (1)	"Blacklisted by OBE-ID"
2 or 4	Not set	no	OK 1 beep (0)	"OK"

Table 3 Transaction result and MMI as function of BlacklistBitmode in TSP List

*) Transaction result see example for transaction data in Annex A

2.1.3.3 GET_STAMPED.request, authenticator check

GET_STAMPED.request will be done to get authenticators: TC authenticator and if applicable TSP Authenticator.

The first GET_STAMPED.request is performed with the KeyRef_OP as listed in the TSP List for that EFC-ContextMark to get the TC authenticator.

If required, the second GET_STAMPED.request is performed with the KeyRef_TSP as listed in the TSP List for that EFC-ContextMark TSP Authenticator.

The RndRse number is the same for both GET_STAMPED.requests.

Depending on application and configuration in TSP List, a check of the TC Authenticator will be done at RSE and the transaction is concluded with a corresponding TransactionResult.

2.1.4 Receipt Phase

In the Receipt Phase the following application data shall be written to the OBE:

- Attribute ReceiptData1: A “receipt” of the current transaction. The following values are used:
 - StationLocation: The identification of the RSE location (= StationID),
 - SessionTime: The time of passage in UTC according to the TS’s internal clock, which is synchronized via NTP
 - optional: SessionFee = “DebitedFee”
 - SessionResult = logical transaction result (Valid, Warning, Not Valid)
- Attribute ReceiptData2: The data of the previous ReceiptData1 (read out in the Presentation Phase) is copied to the attribute ReceiptData2
- The Transaction Counter contained in the attribute EquipmentStatus, which has been read-out in the Presentation Phase, is incremented by one unit and written back.

Details of the values of ReceiptData1 can be found in document 202-B [EasyGo-202-B].

In addition to this the RSE sends a command to trigger the OBE MMI (SET_MMI.Request) according to the Transaction Result. This command contains the following values each meant to trigger a specific action of the OBE’s MMI:

Transaction Result	Command	Value	MMI Action
Valid	OK	0	1 beep
Valid/Warning	WARNING	2	2 beeps
Not valid	NOK	1	4 beeps

2.1.5 Tracking and closing

It is up to the Toll Charger to use either of the following functionality at the TS:

- Tracking: to track the position of the OBE (the vehicle) on the road until it leaves the communication zone.
- Closing to release the OBE: Applicable if no tracking is used (up to the Toll Charger).

2.2 Transaction Record

At completion of the DSRC transaction the RSE generates a Transaction Record for the transaction.

The Transaction Record is stored in the database at the RSE in order to be transferred to the TC's Central System.

The Transaction Record contains a.o.:

- Date and time of the DSRC transaction
- Location of the transaction, according to the RSE location numbering scheme
- Application data retrieved from/written into the OBE (Mandatory data + data needed for toll calculation for the resp. toll context, see chapter 3.2)
- The fee due, if applicable
- The completeness of the transaction
- The transaction result

Transactions which are interrupted after the Presentation Phase are marked as incomplete (see Annex A- field TransactionCompleted); incomplete transactions may be delivered as valid transactions when all charge relating data is available (up to the Toll Charger).

2.3 Tariff management

The fee due ("*FeeDue*") for the vehicle's passage is the tariff valid at the specific station for that vehicle at a certain point in time. Its up to the Toll Charger (TC) to use local Tariff List at RSE or calculating tariff in CS.

2.4 List management

2.4.1 Lists distributed to the Tolling Stations

Among others the following lists are periodically updated at the RSE from the CS, a complete refresh of the lists can be initiated by both RSE and CS:

- Exception List: to detect blacklisted OBEs at the moment of their passage and handle them correctly
- TSP List: gives information about the applicable procedure for a specific OBE type

- Tariff List: Optional, if needed for tariff calculation.

2.4.1.1 Exception List

The Exception List (OBE- Blacklist) will be scanned at each transaction. If the OBE-ID or PAN is found on the Exception List, no valid transaction (in sense of payment) will be carried out.

2.4.1.2 TSP List

The TSP List, see **Fejl! Henvisningskilde ikke fundet.**, holds information about OBE and contract types to be accepted for tolling and further about applicable authentication and tariff calculation.

To avoid multiple entries due to not significant selection criteria, wildcard bit masks are foreseen for data in EFContextMark, EquipmentClass and ManufacturerID.

Data field	Comment
TSP-ID	Unique reference number to a TSP List entry (consecutive numbering)
EFContextMarkContractProvider	Valid ContractProvider as received in the VST (country code + TSP ID)
EFContextMarkTypeOfContract	Valid TypeOfContract as received in the VST
EFContextMarkContextVersion	Valid ContextVersion as received in the VST
EquipmentClass	EquipmentClass as received in the data element ObeConfiguration in the VST: technical information about the OBE.
ManufacturerID	ManufacturerID as received in the data element ObeConfiguration in the VST: technical information about the OBE.
BitmaskContractProvider	Bitmask for wildcard entries in decimal coding. This bitmask maps the EFContextMarkContractProvider (0=*)
BitmaskTypeOfContract	Bitmask for wildcard entries in decimal coding. This bitmask maps the EFContextMarkTypeOfContract (0=*)
BitmaskContextVersion	Bitmask for wildcard entries in decimal coding. This bitmask maps the EFContextMarkContextVersion (0=*)
BitmaskEquipmentClass	Bitmask for wildcard entries in decimal coding. This bitmask maps the EquipmentClass (0=*)
BitmaskManufacturerID	Bitmask for wildcard entries in decimal coding. This bitmask maps the ManufacturerID (0=*)

Data field	Comment
Application	Application to be started: 0 ... EN15509, 1, 2,
BlacklistBitMode	Behaviour for interpreting and writing of bit 15 in EquipmentStatus: 1= do not interpret, do not change 2= do interpret, do not change 3= do not interpret, do change 4= do interpret, do change
SetMMIMode	SetMMI Mode: 0 = use SetMMI with ActionParameter = 0; 1 = use SetMMI with ActionParameter = 69
AC_CRFlag	Indicates if Access Credentials are to be used in the transaction: 0 = AC not used 1 = AC used
KeyRef_OP	KeyRef to be used in the first GET_STAMPED.request (range 111 to 118 allowed, but 115 ... 118 normally used)
KeyRef_TSP	KeyRef to be used in the second GET_STAMPED.request (range 111 to 118 allowed, but 111 ... 114 normally used)

Table 4 Example of a TSP List

2.4.1.3 Tariff List

The Tariff List is stored in the database at the RSE, if applicable.

3 DSRC interface

3.1 Basic requirements

The RSE must conform to [IAP], this implies compliance with the DSRC standards for Profiles, L1, L2 and L7 [Profiles], [L1], [L2], [L7].

Compliance to [GSS] is required, e.g. state transitions must be processed compliant to [GSS] and [IAP] by TS.

Furthermore, it is pointed out, that RSE shall be compatible with OBE both with and without slow response.

3.1.1 Layer 1

Downlink and Uplink Parameters are given in **Fejl! Henvisningskilde ikke fundet.** Table 5 and Table 6 respectively. All 4 downlink channels shall be supported (D1).

Item No.	Parameter	Value(s)	Remark
D1	Carrier Frequencies	Downlink channel 1: 5,7975 GHz Downlink channel 2: 5,8025 GHz Downlink channel 3: 5,8075 GHz Downlink channel 4: 5,8125 GHz	
D1a	Tolerance of Carrier Frequencies	within ± 5 ppm	-
D2	RSU Transmitter Spectrum Mask	1) Out band power: see ETSI EN 300674-1 2) In band power: $\leq +33$ dBm 3) Unwanted emission for unmodulated carrier wave shall be less than: Co-channel uplink at 1,5 MHz: ≤ -27 dBm in 500 kHz. Co-channel uplink at 2,0 MHz: ≤ -27 dBm in 500 kHz. Adjacent channel uplinks: ≤ -47 dBm in 500 kHz. 4) For in-band unwanted emission with modulated carrier wave, class C is to be used: Class C: Co-channel uplink at 1,5 MHz: ≤ -27 dBm in 500 kHz. Co-channel uplink at 2,0 MHz: ≤ -27 dBm in 500 kHz. Adjacent channel uplinks: ≤ -47 dBm in 500 kHz.	Class A should not be used in new installations. Equipment complying with the different classes will result in different re-use distances. See ETSI EN 300674-1 for more details
D4	Maximum E.I.R.P.	+33 dBm	-

Item No.	Parameter	Value(s)	Remark
D4a	Angular E.I.R.P. mask	$Q \leq 70^\circ: \leq +33 \text{ dBm}$ $Q > 70^\circ: \leq +18 \text{ dBm}$	Perpendicular to street surface
D5	Polarisation	Left hand circular	-
D5a	Cross-Polarisation	XPD: In bore sight: $RSU_t \geq 15 \text{ dB}$ At -3 dB area: $RSU_t \geq 10 \text{ dB}$	
D6	Modulation	Two level amplitude modulation.	—
D6a	Modulation Index	0,5 ... 0,9	—
D7	Data Coding	FM0 "1" bit has transitions only at the beginning and end of the bit interval. "0" bit has an additional transition in the middle of the bit interval compared to the "1" bit.	
D8	Bit rate	500 kbit/s	—
D8a	Tolerance of Bit Clock	better than $\pm 100 \text{ ppm}$	—
D9	Bit error ratio for communication	$\leq 10^{-6}$ when incident power at OBE is in the range given by [D11 a to D11b].	
D11	Communication zone	Spatial region within which a bit error ratio according to D9 is achieved	—
D12	Cut-off power level of OBE	-60 dBm	Applicability of this parameter is subject to profiles and sets defined in EN 13372
D13	Preamble	Preamble is mandatory.	—
D13a	Preamble Length	16 bits \pm 1 bit	—
D13b	Preamble Wave form	An alternating sequence of low level and high level with pulse duration of 2 μs . The tolerance is given by D8a	
D13c	Trailing Bits	The RSU is permitted to transmit a maximum of 8 bits after the end flag. An OBE is not required to take these additional bits into account.	

Table 5 Layer 1, Downlink Parameter

Item No.	Parameter	Value(s)	Remark
U1	Sub-carrier Frequencies	The RSU shall support both 1,5 MHz and 2,0 MHz	
U1a	Tolerance of Sub-carrier Frequencies	within $\pm 0,1\%$	-
U1b	Use of Side Bands	Same data on both sides	-
U5	Polarisation	Left hand circular transmitted when left hand circular received	-
U5a	Cross Polarisation	XPD: In bore sight: $RSU_r \geq 15$ dB At -3 dB: $RSU_r \geq 10$ dB	-
U6	Sub-carrier Modulation	2-PSK Encoded data synchronised with sub-carrier: Transitions of encoded data coincide with transitions of sub-carrier.	-
U6b	Duty Cycle	$50\% \pm \alpha$, $\alpha \leq 5\%$	-
U6c	Modulation on Carrier	Multiplication of modulated sub-carrier with carrier.	-
U7	Data Coding	NRZI	-
U8	Bit Rate	250 kbit/s	-
U8a	Tolerance of Bit Clock	Within ± 1000 ppm	—
U13	Preamble	Preamble is mandatory.	—
U13a	Preamble Length and Pattern	$32 \mu s$ to $36 \mu s$ modulated with sub-carrier only, then 8 bits of NRZI coded "0" bits.	
U13b	Trailing Bits	The OBE is permitted to transmit a maximum of 8 bits after the end flag. A RSU is not required to take these additional bits into account.	

Table 6 Layer 1, Uplink Parameter

3.1.2 Profiles

The table **Fejl! Henvisningskilde ikke fundet.** gives the DSRC Profiles (0 and 1) acc. to [Profiles] that shall be supported.

Parameter		Profile 0	Profile 1
D12	Cut-off power level of OBE	-60 dBm	-60 dBm
U1	Sub-carrier Frequencies	1,5 MHz	2,0 MHz
U4a	U4a Maximum Single Side Band E.I.R.P. (bore sight)	-21 dBm	-21 dBm
U12a	Conversion Gain (lower limit)	1 dB for each side band Range of angle: Circularly symmetric between bore sight and $\pm 35^\circ$	1 dB for each side band Range of angle: Circularly symmetric between bore sight and $\pm 35^\circ$
U12b	Conversion Gain (upper limit)	10 dB for each side band	9 dB
N1	Length of private link address (LID)	4 Byte	4 Byte
N2	Maximum number of octets in frame in downlink window	128 Byte	128 Byte
N3	Maximum number of octets in frame in private uplink window	128 Byte	128 Byte
N4	Maximum number of octets in frame in public uplink window	9 Byte	9 Byte
N5	Number of simultaneously allocated public uplink windows	3	3
N8	max. value for „Random Delay Counter“	3	3
N12	max. private medium response time	1	1
T1	Minimum uplink to downlink turn around time	32 μ s	32 μ s
T2	Minimum downlink to downlink window time	0 μ s	0 μ s
T3	downlink to uplink turn around time	160 μ s	160 μ s
T4a	Maximum time to start of transmission in private uplink window	320 μ s	320 μ s
T4b	Maximum time to start of transmission in public uplink window	32 μ s	32 μ s
T5	Time duration of public uplink window	448 μ s	448 μ s
N13FE	Acknowledgement time for RSE	1	1
N13ME	Acknowledgement time for OBE	1	1

Table 7 Profiles

3.1.3 Layer 2

The RSE shall conform to [L2] and [GSS].

Supported frame combinations for Downlink are given in Table 8 and for Uplink in Table 9. **Fejl! Henvisningskilde ikke fundet..**

No	LID	MAC	LLC	APDU	Remark
1	Private	20/28	None	None	Private Uplink Window Allocation
2	Broadcast	A0	03	INIT.request (BST)	Broadcast UI command with window allocation
3	Private	80	03	SET. request, mode = 0 ACTION. request, mode = 0	Private UI command no window allocation
4	Private	80	03	EVENT_REPORT. request (RELEASE), mode = 0	Private UI command no window allocation
5	Private	A0/A8	67/E7	SET. request, mode = 0 ACTION. request, mode = 0	Private AC command mit p = 0 with window allocation
6	Private	A0/A8	77/F7	GET. request SET. request, mode = 1 ACTION. request, mode = 1	Private AC command mit p = 1 with window allocation

Table 8 Supported combinations for Downlink

No	LID	MAC	LLC	LLC status	APDU	Remark
1	Private	60	None	None	None	Private Uplink Window Req. (in public uplink window only)
2	Private	C0	03	None	INIT.response (VST)	Private UI command no window request
3	Private	C0	03	None	GET. response, SET. response, ACTION. response	Private UI command no window request
4	Private	D0	67/E7	40	None (APDU not requested)	Private ACn response f = 0 no window request
5	Private	D0	77/F7	30	None (APDU not available)	Private ACn response f = 1 no window request
6	Private	D0	77/F7	00	GET. response, SET. response, ACTION. response	Private ACn response f = 1 no window request

Table 9 Supported combinations for Uplink

3.1.4 Layer 7

The RSE shall conform to EN 15509 [IAP] (this implies indirect reference to EN 12834 [L7]), implementation shall follow [GSS], if applicable.

The following **T-APDU** are supported:

- Initialisation
- Get
- Set
- Action
- Event-Report

According to [IAP] the following **DSRC layer 7 features** shall be supported:

- **Concatenation** of multiple consecutive T-APDU fragments in one L2 frame (i.e. LLC-service) with and without chaining, if the size constraints for the LLC-frames are not violated (i.e. fit into 1 L2 frame);
- **Fragmentation header** length: 1 octet;

Valid combinations of APDUs are listed in EN 13372 [Profiles].

Application Interface for EFC

Fejl! Henvisningskilde ikke fundet. specifies the EFC Functions that are supported according to [L7] and [EFC API] as Actions:

Name	Action Type	Action Parameter	Response Parameter	Remarks
Get_Stamped	0	GetStampedRq	GetStampedRs	retrieves data with an authenticator from the OBE
Get_Instance	4	GetInstanceRq	GetInstanceRs	retrieves a number of entries out of an attribute's multiple instances
Get_Nonce	6	-	Octet String	Reads a random number generates by OBE Optional, not used in the system
Set_MMI	10	SetMMIRq	-	invokes an MMI function (e.g. signal Ok via buzzer)
Echo	15	Octet String	Octet String	OBE echoes received data

Table 10 Action Functions

The AccessCredentials parameter is supported in the following functions:

- Get

- Get_Stamped
- Get_Instance
- Set

The data field EFC-ContextMark is supported.

Due to ambiguities in previous versions of the standards the RSE shall send SET_MMI.request command with ActionParameter (Container Type) “0” (“Integer”) as well as “45”(hex)/”69”(dec) depending on the corresponding entry in the TSP List.

3.2 EN15509 tolling transaction

In general, the EasyGo+/ EETS tolling transaction is based on the “pick what you need” idea, following EN15509. So only those data will be read from OBE, which is needed for tolling in the respective tolling context together with other data needed for the payment claims.

Table 11 **Fejl! Henvisningskilde ikke fundet.** provides an overview of the attributes involved in the data exchanges of DSRC tolling transactions associated with an EN15509 OBE, e.g. an EasyGo+/ EETS OBE.

In chapter 4 an example for a toll transaction data record is shown.

ATTRIBUTES (EID>0)	AttrId	Type	Length in bytes	Easy Go+/ EETS use	Remarks
CONTRACT					Information associated with the service rights of the Contract Provider (ETS Provider)
EFC Context Mark	0	32	6	M	Contains the Contract Provider Identification. Transmitted as part of the VST.
PAYMENT					Data associated with the Payment transaction.
PaymentMeans (including PAN)	32	64	14	M	Includes: the Personal Account Number, including the Payment Means Issuer (identified by the IIN), The PAN Expiry Date The payment means Usage Control
VEHICLE					Information pertaining to the identification and characteristics of the vehicle.
VehicleLicencePlateNumber	16	47	Variable 13 to 17 bytes	M	Length of the attribute, incl. Country code, Alphabet Indicator and length. **)
VehicleClass	17	49	1	O	
VehicleDimensions	18	50	3	O	
VehicleAxles	19	51	2	O	
VehicleWeightLimits	20	52	6	O	
VehicleSpecificCharacteristics	22	54	4	O	
EQUIPMENT					Information pertaining to the OBE.
EquipmentOBUId	24	56	5 (=4+1)	M	Length of EquipmentOBUId is fixed to 4+1 bytes as specified in EN 15509
EquipmentStatus	26	58	2	O	Includes transaction counter and black list flag
RECEIPT					Information associated with a specific session, including both financial and operational data.
ReceiptData1 (last)	33	65	28	O	
ReceiptData2 (penultimate)	34	66	28	O	

Table 117 Overview of attributes in the data exchange of DSRC tolling transaction

Column “EasyGo+/ EETS Use”: M= mandatory, N= no use, O= optional (up to the toll charger’s needs- TO BE DEFINED FOR EACH TOLL CONTEXT)

***) Acc. to EN15509 the length of this attribute is fixed to 14+3= 17 bytes, but for compatibility reasons the implementation of a variable length is recommended.

3.3 Data specification

For details on specification of attributes see document 202-B [EasyGo-202-B].

3.3.1 VehicleLicensePlateNumber

In General, non Latin-1 LPN characters should be personalized to the OBE as lower case Latin-1 characters acc. to Annex E of EN ISO14906 [EFC API] already.

For license plate information received by OBE using non Latin1 alphabets, a translation to lower case letters applying the same translation table from Annex E of EN ISO14906 shall be carried out at RSE to avoid foreign character sets in the central systems

When other not supported characters, which are not inserted in the translation table, are detected, they shall be substituted with the character “ * ” (star).

3.4 Security features

The EasyGo+/- EETS DSRC transaction comprises the following security features (see [IAP] for details):

- **Transaction counter**, increased by the RSE, allowing detection of transaction sequencing anomalies in the Central System.
- **Authentication to the TSP**, i.e. challenge-response of PaymentMeans data using the GET_STAMPED function with the TSP Key
- **Authentication to the TC**, i.e. challenge-response of PaymentMeans data using the GET_STAMPED function with the Operator Key (TC key)
- **Protected access to the OBE data**, through the implementation of Access Credentials.

4 Example for toll transaction data (informative)

The following table is showing exemplary a toll transaction data record to be transmitted from RSE to CS. Note that not all shown elements might be necessary (or useful) for all EasyGo+/EETS toll contexts, resp. other data elements can be necessary.

Column	Mandatory/ optional	Description
LSID.TransactionId	M	Unique transaction Id for the specific location
LSID	M	LocationStation ID
LocationLane	O	Lane ID
TimeStamp	M	Time stamp of the DSRC Transaction (UTC)
EFCCContextMark.ContractProvider	M	ContractProvider
EFCCContextMark.TypeOfContract	M	TypeOf Contract
EFCCContextMark.ContextVersion	M	ContextVersion
PaymentMeansPAN	M	PAN
PaymentMeansExpiryDate	M	Expiry date of the OBE/Contract
PaymentMeansUnits	O	account balance units
EquipmentOBUIManufacturer	M	Manufacturer – Code of the OBE-ID
EquipmentOBUISerial	M	Serialnumber part of the OBE-ID
EquipmentStatusRead	O	EquipmentStatus as read from OBE
VehicleLicensePlateNationality	M	Nationality code (from OBE, hex)
VehicleLicensePlateAlphabet	M	Alphabet indicator
VehicleLicensePlateLicensePlate	M	Licence plate
VehicleClass	M	Derived from CCC part of attribute VehicleClass
VehicleAxles	O	Number of axles (lower 6 bit of attribute VehicleAxles)

Column	Mandatory/ optional	Description
VehicleSpecificCharacteristics	O	Contains EmissionClass
TariffID	O	ID of the Tariff Table
FeeDue	M	Amount of fee due for the passage
FeeUnitDue	M	Fee unit of the fee due
TransactionCompleted	O	Transaction completeness: <ul style="list-style-type: none"> • complete • Incomplete – Access denied • Incomplete –no response for Presentation Phase • Incomplete- no response for Debit phase • Incomplete - no response for Receipt Phase
TransactionResult	M	Clearing Information <ul style="list-style-type: none"> • OK (valid) • permanent exemption • temporary exemption • Contract Expired (valid) • Authenticator not valid (not valid) • OBE blacklisted by OBE-ID (not valid) • OBE blacklisted by bit 15 of EquipmentStatus (not valid)
IssuerAuthenticator	M	An authenticator computed with the secret key of the TSP Used by the TSP to check the validity of the present transaction
RndRSE	M	Random number sent by the RSE to the OBE for authenticator calculation
KeyRef_CI	M	Key reference for the issuer authenticator (range 111 to 118)
CI-ID	O	Applied entry of CI-List

5 References

5.1 Standards and external documents

For dated references, subsequent amendments to or revisions of any of these publications apply only when incorporated in it by amendment or revision. For undated references the latest edition of the publication referred to applies.

Reference	Document Ref	Date / Version	Document title
[IAP]	EN 15509	2014	Road Traffic and Transport Telematics (RTTT) – Electronic Fee Collection – Interoperability application profile for DSRC
[EFC API]	EN ISO 14906:2011/ Amd1:2015	2011/ Amd1:2015	Road Traffic and Transport Telematics (RTTT) – Electronic Fee Collection – Application interface definition for dedicated short range communication
[GSS]	GSS	V3.2:2003	Global Specification for Short Range Communication (Kapsch TrafficCom AB, Kapsch Telecom GmbH, Thales e-Transactions CGA SA, version 3.2, 2003- 08, http://www.etc-interop.com/pdf/gss_32.pdf)
[L1]	EN 12253		Road Transport and Traffic Telematics (RTTT) – Dedicated Short-Range Communication (DSRC) – Physical layer using microwave at 5.8 GHz
[L2]	EN 12795		Road Transport and Traffic Telematics (RTTT) – Dedicated Short-Range Communication (DSRC) – DSRC data link layer: Medium access and logical link control
[L7]	ISO 15628 (formerly EN 12834)	2013	Road Transport and Traffic Telematics (RTTT) – Dedicated Short-Range Communication (DSRC) – DSRC Application Layer (formerly EN 12834)
[Profiles]	EN 13372		Road Transport and Traffic Telematics (RTTT) – Dedicated Short-Range Communication (DSRC) – Profiles for RTTT applications

5.2 EasyGo documents

Reference	Document Ref	Date / Version	Document title
[EasyGo-202-A]	202-A		EasyGo+ and EETS OBE Functional Requirements (Replacement for “Functional requirements for EasyGo+ OBEs”)
[EasyGo-202-B]	202-B		EasyGo+ and EETS DSRC Tolling Data Specification (Replacement for “EasyGo+ OBE personalisation, configuration and operating parameters”)
[EasyGo-202-C]	202-C		EasyGo+ and EETS DSRC transaction for Tolling and Enforcement (Replacement for “EasyGo+ DSRC transaction for tolling and enforcement”)